



JMC Wisconsin Updates for 18-19 Overview

MIDWEST REGIONAL CONFERENCE

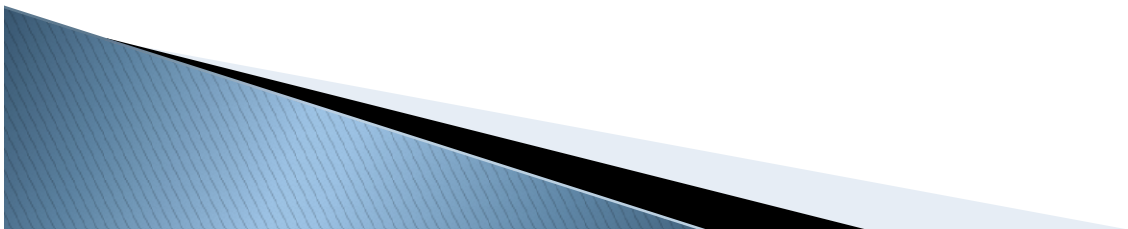
Altoona

June 20, 2018

Greg Gilman

WISE Topics: what will be covered

- ▶ WISEid file update
- ▶ State Course Code Transition
- ▶ Career and Technical Education – Program History
- ▶ World Language Update
- ▶ Special Ed Exit Reason
- ▶ Homeless Update – Program History
- ▶ Military Connected – Program History



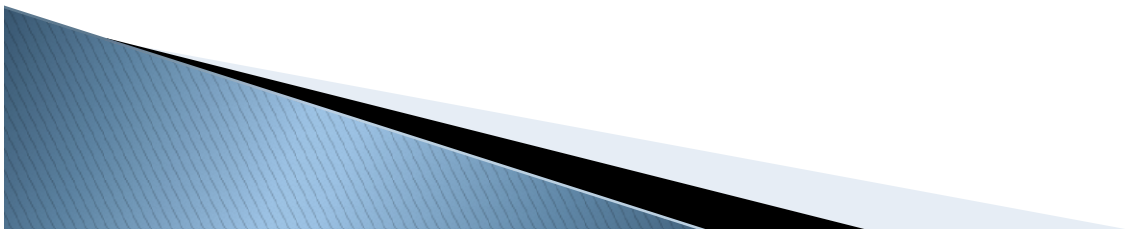
WISE Topics: what will be touched on

No Location Release (Safe at Home)

WISEid via Ed-Fi API

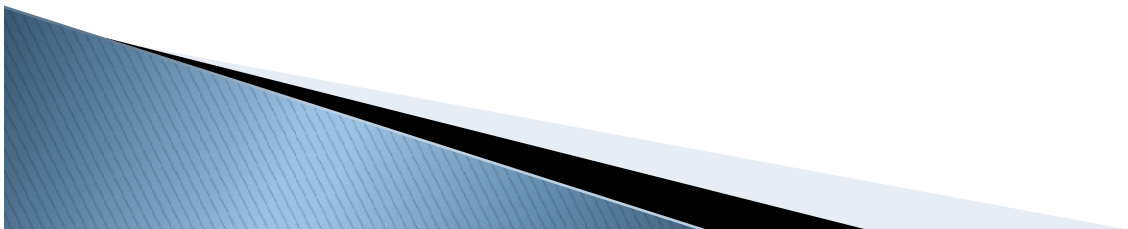
WISEdata in Near Real Time

Ed-Fi V3.0



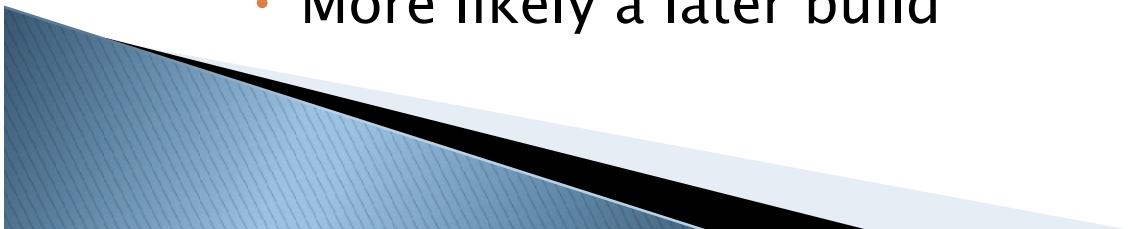
WISE Topics: what will not be converged

- ▶ Special Education Use cases
- ▶ College and Career Readiness (CCR)
- ▶ Roster – Section Submission Structure



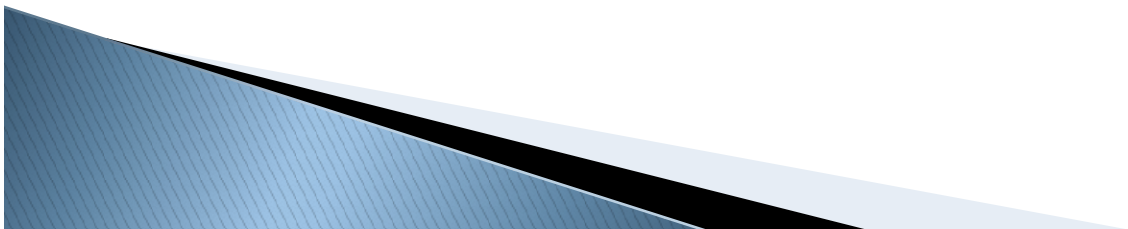
Status

- ▶ JMC Development Is Not Complete
 - ALL SCREEN SHOTS ARE TENTATIVE
 - MANY WILL LIKELY CHANGE
 - THERE MAY BE OMISSIONS IN WHAT YOU SEE TODAY
- ▶ WI DPI WISEdata Certification Will Not Happen Until July or Later
- ▶ Availability
 - Test Module A – “August 1” Build
 - Test Modules B & C
 - Possibly “August 1” Build
 - More likely a later build



WI DPI's List of Projects

- ▶ [Link to DPI Project List](#)
- ▶ Noteworthy
 - CTE use cases are still being worked on
 - No Location Release is work in progress
 - Some projects listed are for 19–20
 - Certification Will Happen Until July!



WI DPI Certification Notes

Project	Test Module	Owner	Status	Notes	Sent/Reviewed With Vendors
Courses	B	Meghana	50% done		TBD
Roster/Grades	B	Anusha	2nd ver started 6/11		
Programs (not covered in other projects)	B	Meghana	Started	Doc covers how/when Programs are submitted (Roster, SPA, Homeless, etc.); include sub links to other use case documents	
CTE	C	Anusha	Complete		Complete (reviewed in person as well)
CCR	C	Anusha	Complete		Complete (reviewed in person as well)
Homeless	A	Meghana	Complete		Doc sent; no review with vendors yet
Military Connect	A	Meghana	Not started		
World Language	A	Meghana	Not started		
NLR	?	TBD			I
SPED Exit	A	Anusha	Not started		TBD

Next Steps

- Test Module A to vendors by 6/22; consolidated workbook
- JR create Google Spreadsheet scheduling shell
- Anusha/JR put in availability in Google doc and block off on Outlook Calendar

JMC's Status

- ▶ User Interface (the parts you see) are nearly finished
- ▶ API Updates for 18–19 have been ported
- ▶ Updating tables via API
- ▶ Display new course data in User Interface
- ▶ Data Submission Updates need to be coded and tested yet
- ▶ Certifications projected
 - A: early July
 - B: late July
 - C: late July or early August



What this means for today's presentations

- ▶ Information could change but should be close
- ▶ Follow-up webinar for any further changes in JMC will be scheduled after certifications complete
 - August/September/October
 - Best guess is will be under 1 hour
 - Will do as live webinar
 - Will record for those who have hard time attending during the regular school day

