



# MN Counting All Students (Ed-Fi) Error Correction

May 2019

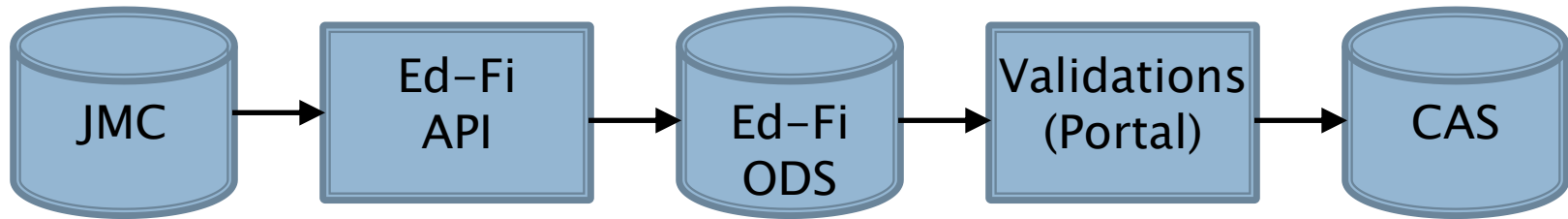
Paul Freid & Greg Gilman

# Overview



- ▶ JMC is releasing a second series of Counting All Students (CAS) videos in 2019.
- ▶ These videos will be short and will cover Start Year, Mid Year, and Year End tasks for Minnesota State Reporting.

# CAS Error Correction Data Flow – Simple View



# CAS Error Correction



## CAS Interoperability

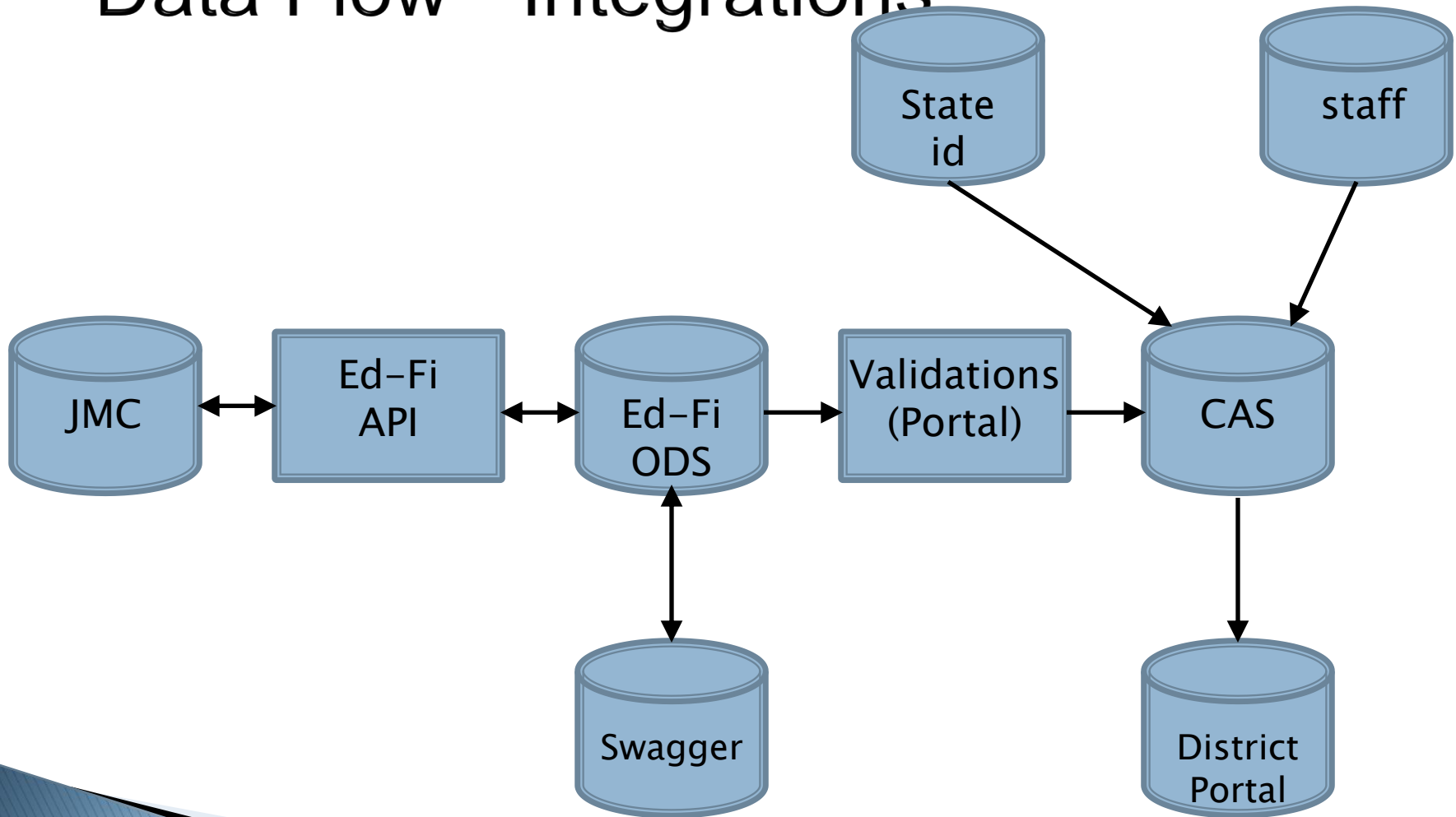
CAS integrates with other software:

- ▶ staff
- ▶ State id
  - Acquiring state ids for
    - Staff
    - Students

Districts use combination to submit data

Some data does not get into CAS right away (overnight)

# CAS Error Correction Data Flow - Integrations



# CAS Error Correction



## Minnesota – Counting All Students – Update Grade

- **Show Results** button

A rectangular button with rounded corners, a blue border, and the text 'Show Results' in a blue, sans-serif font.

- will display summary of records sent
- HTTP Codes
  - 200's – GOOD CODES
  - 400's – BAD CODES
    - Incomplete or invalid data
    - Message will hold clues on how to fix
  - 500's – BAD CODES
    - Data incorrectly formatted
      - Possibly programming error

# CAS Error Correction



## CAS Update Grades Summary

### Student Section

#### Example 400 Series Error Code

#### ▶ 403 Forbidden; Authorization denied

The claim does not have any established relationships with the requested resource

- May be normal for initial submission
  - Will happen for Student resource until have successful StudentSchoolAssociation resource submitted successfully
- Can resubmit same data again and may go away

# CAS Error Correction



## CAS Update Grades Summary

### Student School Associations Section

#### Example 400 Series Error Code

403 Forbidden; Authorization denied based on the authentication credentials provided there is another education organization that has a current studentSchoolAssociation (enrollment) and therefore update not allowed

- Possible overlap in claim to student
- Student may have transferred out of your district – drop student correctly?



# MDE Ed-Fi (CAS) Resources

- ▶ <https://education.mn.gov/MDE/dse/count/>

# JMC Resources



- ▶ [http://jmcinc.com/state\\_reporting](http://jmcinc.com/state_reporting)
- ▶ Documentation Updates
  - ▶ Minnesota State Reporting (PDF)
  - ▶ Instructional Videos Series
  - ▶ Sign up for free web-based training
  - ▶ All will be updated on ongoing basis

Simplicity.  
Affordability.  
Unsurpassed Support.

STUDENT RECORD MANAGEMENT SOFTWARE

JMC INC.

Phone: 1.800.524.8182  
Tech Support: support@jmcinc.com  
Client FTP Login

Online  
TECHNICAL SUPPORT

JMC Inc.

Since 1980



CURRENT BUILD DATE:

NextGen: 3/28/19

- Download / Update Software Resources
- Secretary / Office Professionals
- Technology Professionals
- Administrators
- Teachers
- State Reporting
- Food Service Professionals
- Health Professionals
- Prospective Clients
- Contact Us
- Office Supplies
- Upcoming Events

News

There are a lot of changes happening with state reporting. Please refer to the appropriate tab at right for your state for information about documentation updates, deadlines, and related news.

Remote Technical Support



## STATE REPORTING

All State Reporting resources are available for you on this page. Please click on the tab that contains the state reporting information you need.

- Minnesota
- Wisconsin
- Nebraska
- Iowa
- Other States

JMC prides itself on keeping up-to-date on all Minnesota state reporting requirements. All Minnesota state reporting options are contained in the JMC Minnesota module and include options for MARSS, MCCC, Early Education Student, Perkins, STAR, and Graduation Standards reporting. Before you upload your files to the Minnesota Department of Education, most file generation options in the JMC Minnesota module will generate an error report for you. This means you can correct nearly all issues with your data before uploading your files to MDE.

[Early Education](#) [MARSS](#) [MCCC](#) [Perkins](#) [STAR](#)

### Counting All Students (Ed-Fi) Video Series

Counting All Students - Ancestry Data Collection	<a href="#">PDF 2/19/2019</a>	<a href="#">Video 2/19/2019</a>
Counting All Students - Miscellaneous	<a href="#">PDF 3/21/2019</a>	<a href="#">Video 3/21/2019</a>
Counting All Students - Start Year	<a href="#">PDF 3/7/2019</a>	<a href="#">Video 3/11/2019</a>
Counting All Students - Near Real Time vs. Batch Processing	<a href="#">PDF 3/7/2019</a>	<a href="#">Video 3/11/2019</a>

### RECENT PRESENTATIONS

MDE Ed-Fi Overview from JMC 2018 Summer Conference in Chaska	<a href="#">PDF 8/2/2018</a>
--	------------------------------

### DOCUMENTATION

Minnesota State Reporting	Updated 5/02/2019
Attendance MN	Updated 4/26/2018

## JMC Minnesota State Reporting News

JMC Regional Conference in Minneapolis/St. Paul Area on August 6, 2019

# Questions?

- ▶ Feel free to contact us:
- ▶ JMC Technical Support
  - ▶ Talk with Us: 800-524-8182 ext 1
  - ▶ Website: <http://www.jmcinc.com>
  - ▶ Support Tickets:  
<http://tickets.jmcinc.com/>
  - ▶ Email: [Support@jmcinc.com](mailto:Support@jmcinc.com)